



# ENAVIGO

COMPOSITE YACHTS



## Enavigo 38 R - *Designers comment*

The boat is designed for the sailor who puts excellence first and knows that quality and quantity are two very different properties.

We gathered all our resources to design and help build the ultimate Club Racer.

The hull is the result of extensive CFD and VPP studies. The moderate beam and narrow static waterlines optimise upwind and downwind performance, whilst the rounded chine extending forward to the bow, the balanced volume distribution and high prismatic coefficient through all heel angles give the boat:

- **ease of handling**
- **a comfortable dry ride in rougher seas**
- **exceptional offshore and reaching speed potential.**

The light and stiff high tech boat structures are designed according to ISO 12 215 Category A and have been FEA optimized. High aspect ratio appendages and high ballast/displacement ratio combined with a generous sailplan and a light but easy to handle stable rig further boost the seaworthiness and performance of the yacht.

Below deck she accommodates a sporty crew of eight, four of whom sleep on pipe berths. The XL bath gives the crew big boat comfort on offshore races. The essential galley is equipped with a large fridge and food storage capabilities. A dedicated large, well equipped navigation station is given prime position directly accessible to crew members.

On deck the large cockpit, wide side decks and minimalistic deckhouse give the boat the GP racer look. This is emphasised by the oversized high quality and ergonomically positioned deck hardware which enable both a shorthanded crew and a full racing crew to achieve the boat's maximum potential with ease and in safety.



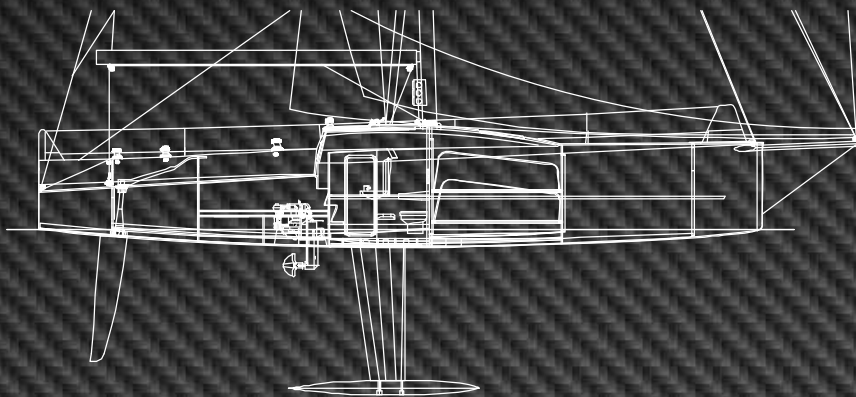
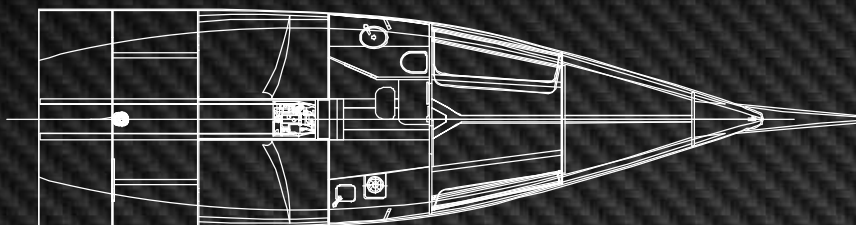
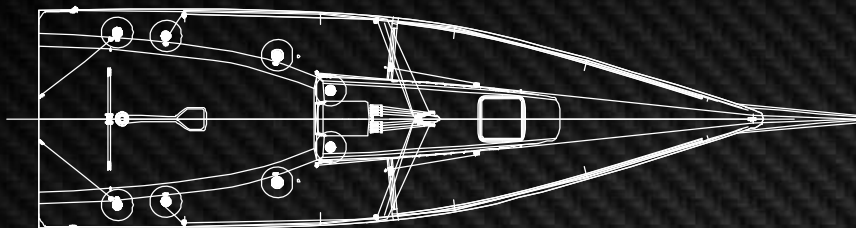
## Enavigo 38 R - *Construction*

- Hull** built in sandwich construction of carbon fibres and red cedar core all laminated with epoxy resin in vacuum conditions
- Structure** built in sandwich construction of carbon fibres and PVC core all laminated with epoxy resin in vacuum conditions, UD carbon capping and chainplates
- Deck** sandwich construction of carbon fibres and PVC core all laminated with epoxy resin in vacuum conditions-local UD carbon reinforcements
- Rig** carbon mast, complete ROD system standing rigging, carbon boom and spreaders, carbon bowsprit
- Rudder** carbon stock and Jeffa steering system, glass epoxy foil
- Keel** SS structure, glass epoxy foil, Pb-Sb bulb

## Enavigo 38 R - *Equipment*

- Hardware** tracks and cars Harken Performa Racing, clutches Spinlock, winches 2x 40.2STA (main), 2x 46.2PTA (primary), 2x 40.2STA (halyard), 2x 40.2STA (backstay) deflectors and thimbles Kohlhof, blocks Harken black magic
- Engine** Yanmar 3YM20C Saildrive 20HP diesel engine, Gori racing 2 blade folding propeller, fuel tank 50 l
- Interior** 8 berths, central navigation console, mini galley and WC, water tank 87 l





### **Main Characteristics:**

LOA=11600  
LWL=11534  
Bmax=3500  
Draft=2600  
Dspl=3765kg  
Keel=1850kg  
RM@30°=39170Nm  
CPW=3200

### **Sails:**

I=15060  
J=5050  
P=15800  
E=4950  
IFR0=15400  
Igen=17120  
SPL=6700  
G 80%=26m<sup>2</sup>  
G 105%=44,5m<sup>2</sup>  
Main=58,5m<sup>2</sup>  
FR0=80m<sup>2</sup>  
C0=78m<sup>2</sup>  
A1=128m<sup>2</sup>  
A2=155m<sup>2</sup>

